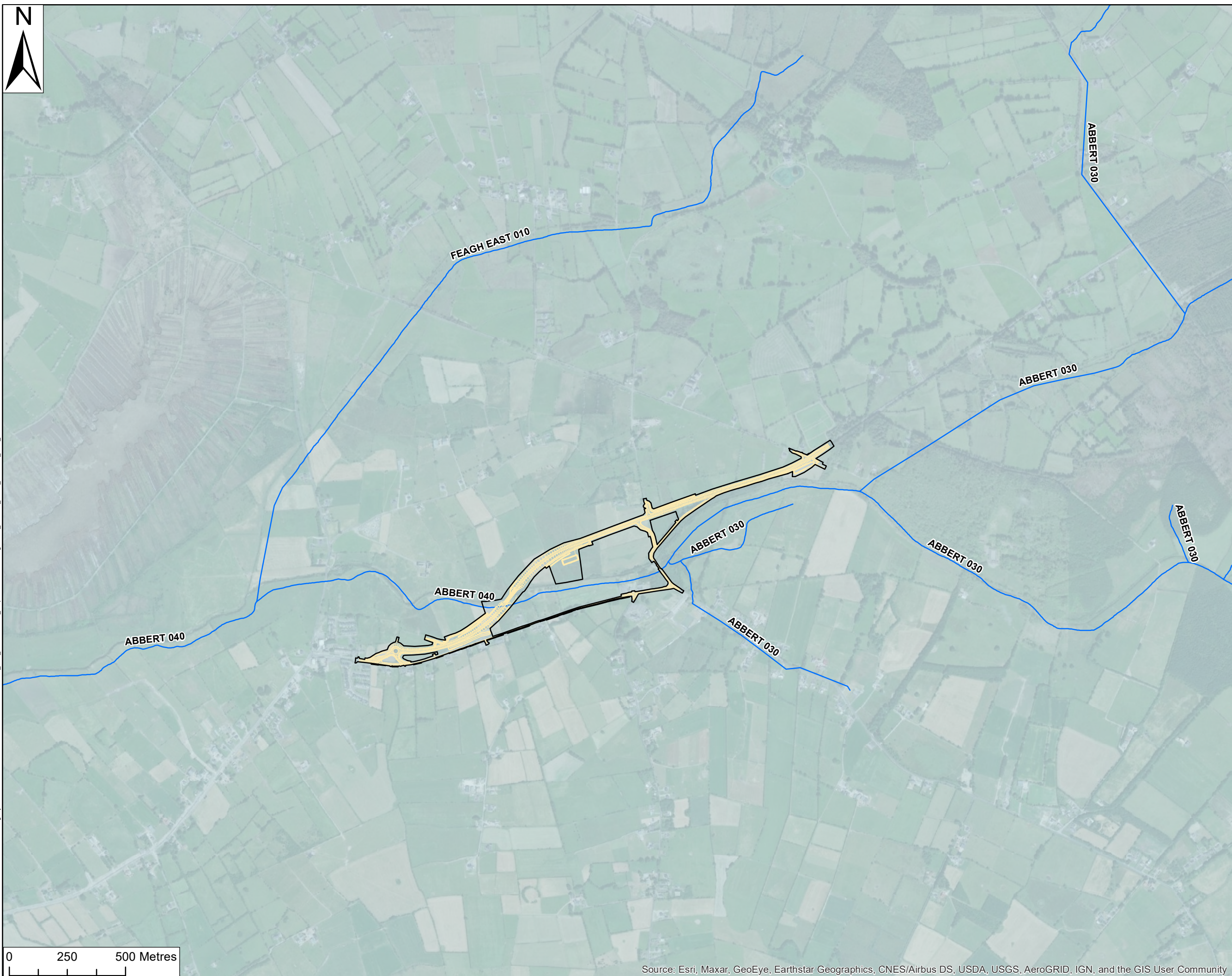


# Figures - Chapter 9: Water



Filename: \\na.aecomnet.com\fs\EMEA\Dublin\IEDBL\Legacy\DU-MAN-002\Data\CD\Dublin-Jobs\GIS\60597858\_N63\_Ph1-4\GIS\02\_Maps\GroundWater\Figure1\_Surface\_Water\_Features\_EFB\_20200215.mxd



**Arena House**  
Arena Road  
Sandymount,  
Dublin 18  
Ireland  
T +353 1 294 0800  
www.rod.ie

**Adelphi Plaza**  
George's Street Upper  
Dun Laoghaire  
Co. Dublin  
Ireland  
T +353 (1) 238 3100  
www.aecom.com

**Project Title:**  
N63 LISS TO ABBEY  
REALIGNMENT SCHEME



- LEGEND**
- CPO Boundary
  - N63-Proposed Development
  - WFD River Waterbody
  - WFD Catchment

**AECOM Internal Project No:**  
60597858

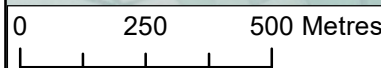
**Drawing Title:**  
SURFACE WATER  
FEATURES

**Scale at A3:** 1:15,000

**Drawing No:**  
FIGURE 9.1

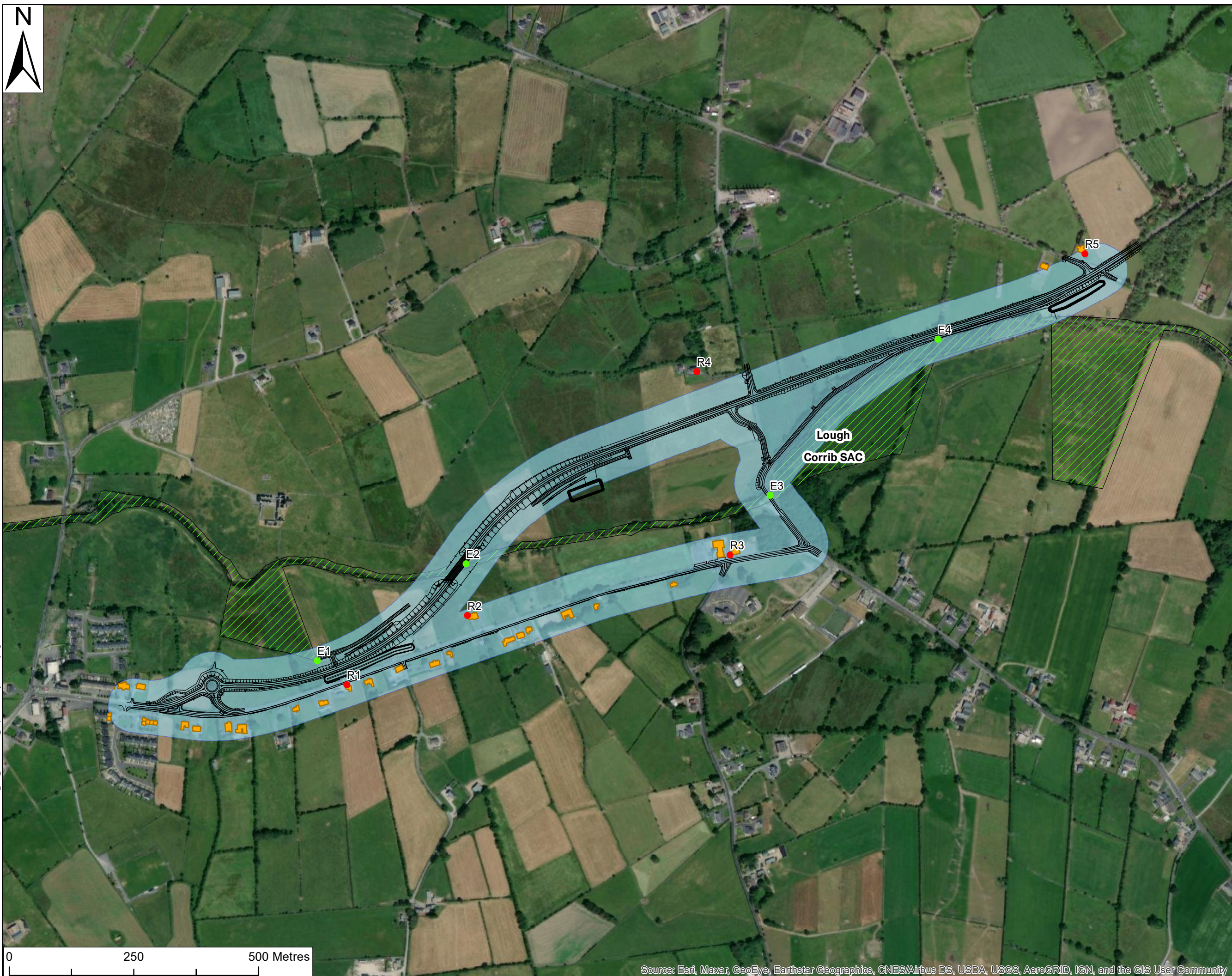
**Drawn: Chk'd: App'd: Date:**

EFB DG DM 25/11/21



This drawing has been prepared for the use of AECOM's client. It may not be used, modified, reproduced or relied upon by third parties, except as agreed by AECOM or as required by law. AECOM accepts no responsibility, and disclaims any liability whatsoever, to any party that uses or relies on this drawing without AECOM's express written consent. All measurements must be obtained from the stated dimensions.

# Figures - Chapter 10: Air Quality



**LEGEND**

- Proposed Road Development
- Human Receptors included in the local air quality assessment
- Ecological transect start points included in the local air quality assessment
- Receptors included in the calculation of Index of Overall Change
- Special Area of Conservation (SAC)
- 50m Carriageway Buffer

**AECOM Internal Project No:**  
60597858

**Drawing Title:**

**AIR QUALITY**

**Scale at A3:** 1:7,000

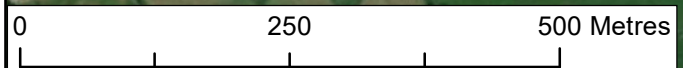
**Drawing No:**

**FIGURE 10.1**

**Drawn: Chk'd: App'd: Date:**

DG SW EN 01/02/2021

Filename: \\du-man-002.acotwison.co.uk\Dublin\Jobs\GIS\60597858\_N63\_Ph1-4\GIS\02\_Maps\Air Quality\Figure\_20210223.mxd



This drawing has been prepared for the use of AECOM's client. It may not be used, modified, reproduced or relied upon by third parties, except as agreed by AECOM or as required by law. AECOM accepts no responsibility, and denies any liability whatsoever, to any party that uses or relies on this drawing without AECOM's express written consent. All measurements must be obtained from the stated dimensions.