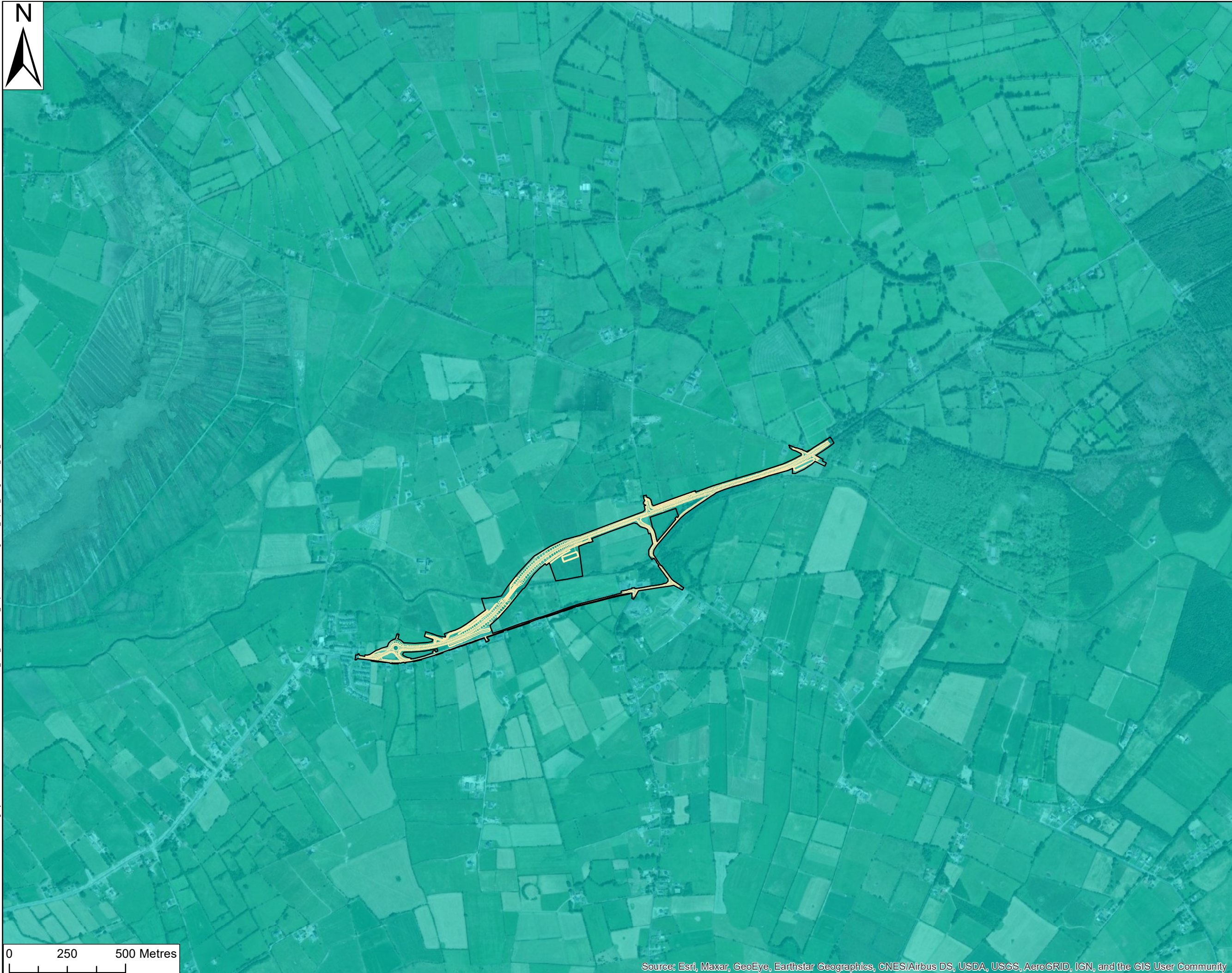




Filename: \\na.aecomnet.com\fs\EMEA\Dublin\IEDBL\Legacy\DU-MAN-002\Data\CAD\ublin-N63_Ph1-4\GIS\02_Maps\GroundWater\Figures\3_Aquifer_Designations_EFB_20200215.mxd



Source: Esri, Maxar, GeoEye, Earthstar Geographics, CNES/Airbus DS, USDA, USGS, AeroGRID, IGN, and the GIS User Community

Roughan & O'Donovan - AECOM Alliance



Arena House Arena Road Sandycroft, Dublin 18 Ireland T +353 1 294 0800 www.rod.ie	Adelphi Plaza George's Street Upper Dun Laoghaire Co. Dublin Ireland T +353 (1) 238 3100 www.aecom.com
---	--

Project Title:
N63 LISS TO ABBEY
REALIGNMENT SCHEME



- LEGEND**
- CPO Boundary
 - N63-Proposed Development
 - Aquifer Designation**
 - Regionally Important Aquifer - Karstified (conduit)

AECOM Internal Project No:
60597858

Drawing Title:
AQUIFER DESIGNATIONS

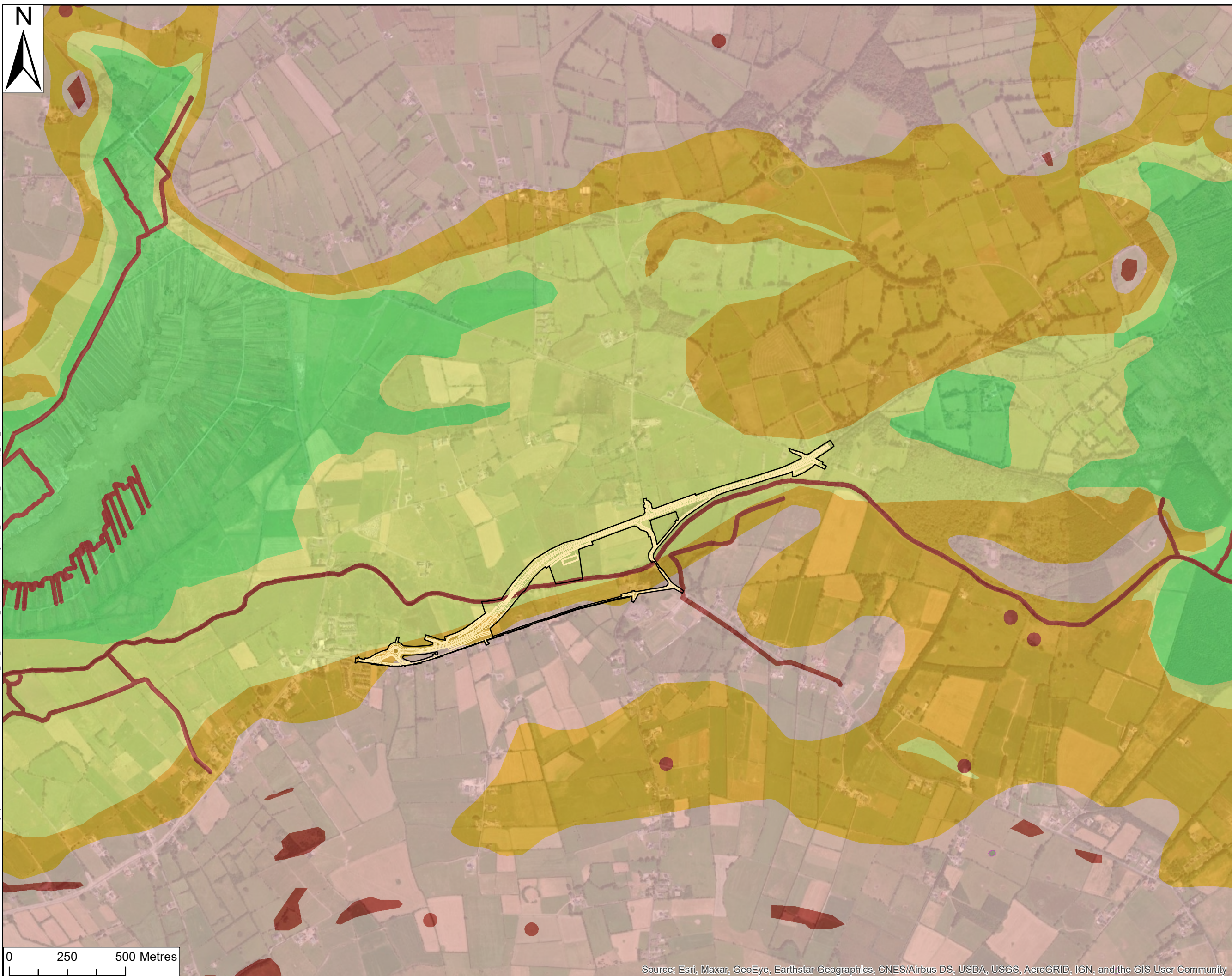
Scale at A3: 1:15,000

Drawing No:

FIGURE 8.3
Drawn: Chk'd: App'd: Date:

EFB DG DM 01/12/21

This drawing has been prepared for the use of AECOM's client. It may not be used, modified, reproduced or relied upon by third parties, except as agreed by AECOM or as required by law. AECOM accepts no responsibility, and disclaims any liability whatsoever, to any party that uses or relies on this drawing without AECOM's express written consent. All measurements must be obtained from the stated dimensions.



LEGEND

- CPO Boundary
- N63-Proposed Development
- Groundwater Vulnerability**
- Rock at or near Surface or Karst
- Extreme
- High
- Moderate
- Low
- Water

AECOM Internal Project No:
 60597858

Drawing Title:
 GROUNDWATER
 VULNERABILITY

Scale at A3: 1:15,000

Drawing No:
 FIGURE 8.4

Drawn: Chk'd: App'd: Date:
 EFB DG DM 25/11/21

File name: \\na.aecomnet.com\fs\EMEA\Dublin\IEDBL\Legacy\DU-MAN-002\Data\CD\Dublin-N63_Ph1-4\GIS\02_Maps\GroundWater\Figure8.4_Groundwater_Vulnerability_EFB_20200215.mxd

This drawing has been prepared for the use of AECOM's client. It may not be used, modified, reproduced or relied upon by third parties, except as agreed by AECOM or as required by law. AECOM accepts no responsibility, and disclaims any liability, whatsoever, to any party that uses or relies on this drawing without AECOM's express written consent. All measurements must be obtained from the stated dimensions.